



Crozet Water System Plan

RWSA BOARD OF DIRECTORS

Jennifer Whitaker, Director of Engineering & Maintenance

August 25, 2020

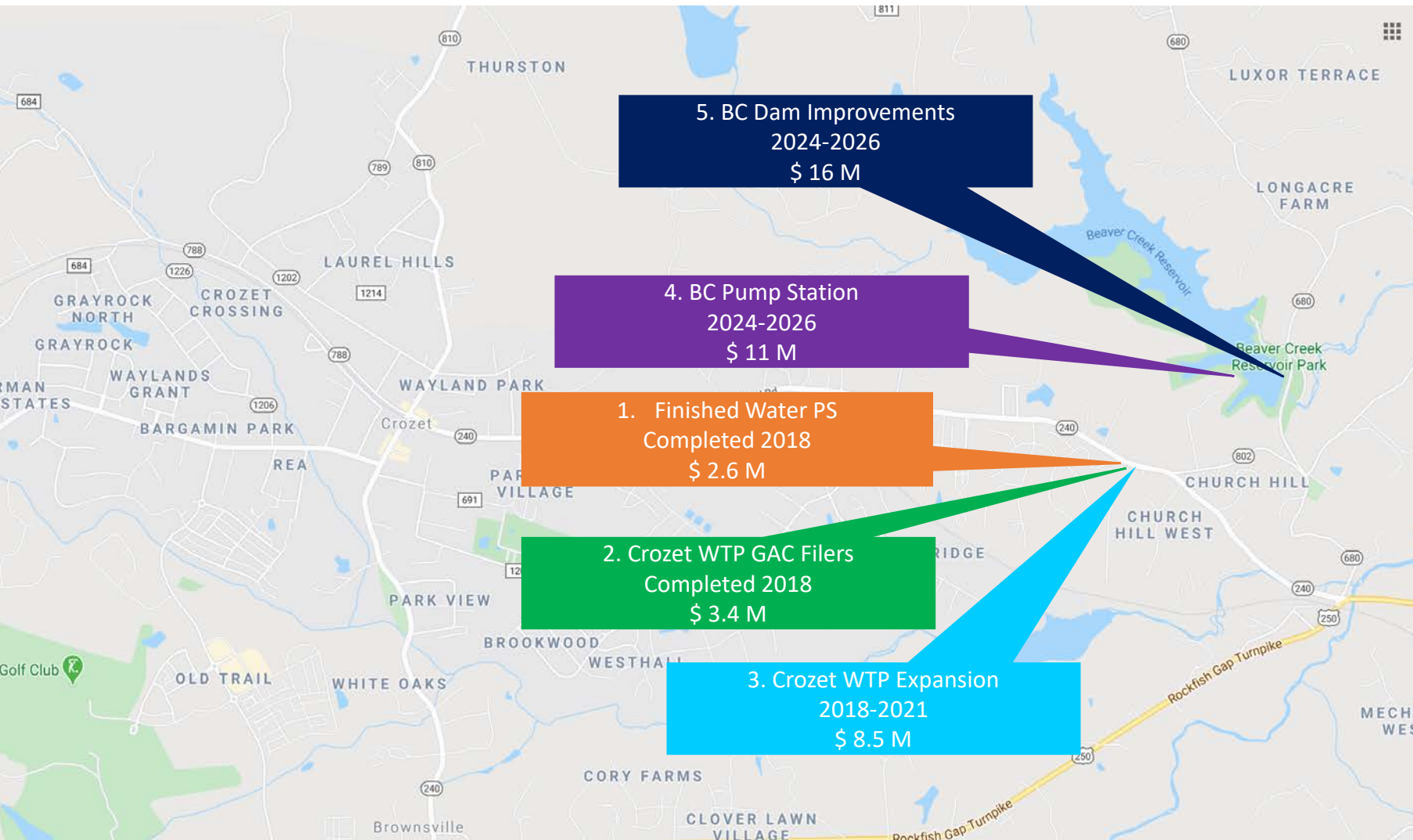
Current RWSA Facilities - Crozet Area

- Beaver Creek Dam
- Raw Water Intake & Pump Station
- Raw Water Pipeline
- Crozet Water Treatment Plant
- Finished Water Pump Station
- Finished Water Piping
- Buck's Elbow Tank



Drinking Water Infrastructure Plan

- Master Plan completed 2019 & updated 2020
- Beaver Creek Reservoir is an adequate water supply
- Water withdrawal permits are required from the Virginia DEQ
 - Includes a downstream release from the reservoir
- WTP capacity to increase from 1 to 2.1 MGD by 2020 to serve community's increasing maximum day demand
- Beaver Creek Dam requires significant upgrade to meet recent dam safety requirements
- A new raw water pump station is needed
- Water distribution piping projects will be required



Crozet Water Projects Capacity & Dam Safety

1. Finished Water PS Completed 2018	\$2.6 M
2. Crozet WTP GAC Filters Completed 2018	\$3.4 M
3. WTP Expansion 2018-2021	\$ 8.5 M
4. Beaver Creek Pump Station 2024 - 2026	\$11 M
5. Beaver Creek Dam Improvements 2024 - 2026	\$ 16 M

\$41.5 M

Finished Water Pump Station

- Completed September 2018
- Cost: \$2.6 M



Granular Activated Carbon Filters

- Remove organic material to minimize disinfection byproducts
- 2 – 20,000 lb Contactors
- 1 MGD Capacity
- Completed: April 2018
- Cost: \$3.4 M



Water Treatment Facility Upgrade

- Construction: December 2018 - December 2022
- Cost: \$8.5 M

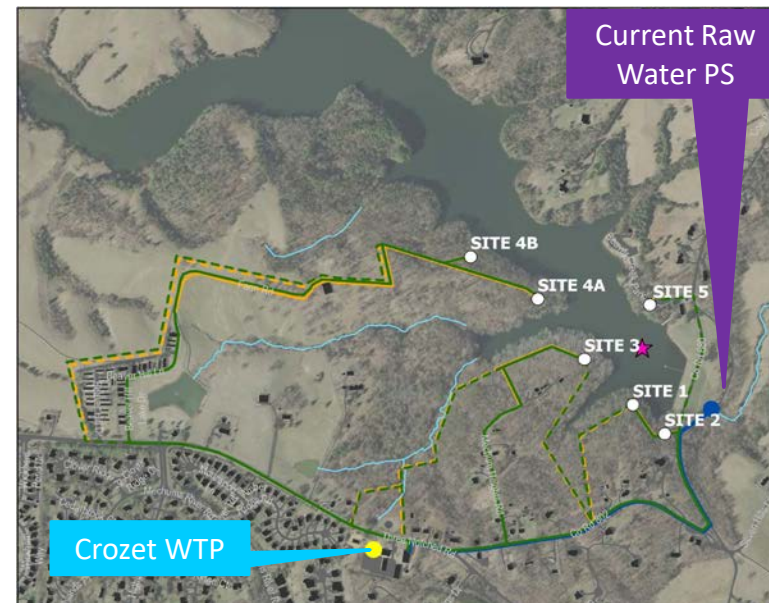


Beaver Creek Dam, Pump Station & Piping Modifications

- Upgrade the spillway to meet DCR dam safety standards
- Replace the raw water pump station, intake, and pipe to the Crozet WTP
- Cost: \$27 M
- Completion: 2024 - 2026



Proposed Spillway



Existing Raw Water Pump Station ₈



Questions?
