



# Update for City Council

## *7 Years of Progress*

May 2013



# Setting the Stage

- Needs Assessment – 2006

Facility Type	City of Charlottesville Inventory	School Sites Inventory	Total Current Inventory	Charlottesville Current Service Level Based on City Inventory	National Guideline Service Level	Recommended City Standard	Surplus/Deficit
Neighborhood Parks (Acres)	54.26	0.0	54.3	1.3 acres/1,000	2 acre/1,000	2.0 acre/1,000	Need 27 ac (See Section 5.2.1.1)
School Parks (Acres)	0.00	143.4	143.4	3.5 acres/1,000	1 acres/1,000	3.5 acres/1,000	(1) See Section 5.2.1.1
Community Parks (Acres)	116.80	0.0	116.8	2.9 acres/1,000	3 acres/1,000	3.0 acres/1,000	Need 5 ac
Regional Parks (Acres)	402.30	0.0	402.3	9.9 acres/1,000	10 acres/1,000	10.0 acres/1,000	Need 5 ac
Total Park Acres	573.36	143.4	716.8	17.6 acres/1,000	15 acres/1,000	18.5 acres/1,000	Need 37 ac

- Facility Standards included in 2007 City Comprehensive Plan
- Multi-Year Plan for Renovations & CIP

# Parks & Recreation Facility Renovations

- McGuffey Park Renovation *2007*
- Starr Hill Park Master Plan *2007*
- Greenleaf Park Sprayground *2008*
- Meade Park Master Plan and Onesty FAC *2007-09*
- Forest Hills Master Plan and Renovation *2010*
- Smith Aquatic & Fitness Center *2010*
- Azalea Park Master Plan (2011) and Renovations *2012-13*
- Carver Recreation Center Renovations & Reopening *2013*
- Washington Park Bathhouse Renovations *2013*
- Rives Park Renovations *2013*

# McGuffey Park Renovations- 2007





# Starr Hill Park Master Plan - 2007





# Greenleaf Park Spray Ground - 2008





# Meade Park Master Plan & Onesty Family Aquatic Center - 2009



2008 Attendance (old pool)	7,101
2009-12 Avg. Annual Attendance	31,826





# Forest Hills Park Master Plan & Park Renovations - 2010



Virginia Recreation & Park Society Award  
Best New Renovation - 2010



# Smith Aquatic and Fitness Center – 2010

- LEED Platinum Certified
- Athletic Business Facility of Merit Award - 2011
- 2012 attendance 70,344





# Azalea Park Master Plan & Renovations



Dog Park, Basketball Court, Playground, Wetland and Road improvements complete.

Remainder of Plan Implementation in FY14.



# Carver Recreation Center

- Renovated Facility opened January 2013



January – March 2013 Attendance:  
9,362



# Washington Park Pool Bathhouse



Opens Memorial Day Weekend 2013



The site plan for Rives Park includes the following features and proposed improvements:

- BUMP OUTS** for traffic calming and cross walks
- PARK SIGNAGE**
- STREET TREES** removal of select trees to open up view
- MAIN ENTRY** with seat walls
- FAMILY RESTROOM**
- CONCRETE WALK** for tricycles and bicycles
- EXISTING PARKING** 28 spaces
- RELOCATED SHELTER**
- SHELTER**
- PLAYGROUND** 2-5 year old
- PLAYGROUND** 5-12 year old with climbing wall, chalk drawing area, and lower basketball backboard
- OPEN PRACTICE AREA**
- BASKETBALL COURT** relocated to allow room for play areas
- LIMB UP OR REMOVE SELECT EVERGREEN TREES** to allow for 'eyes on the park'
- MULCH AREA** under existing tree line
- EXTENSION OF EXISTING FENCELINE**
- EXISTING TREES**
- IMPROVED PEDESTRIAN ENTRY** with low hedge planting along sidewalk
- PICNIC LAWN**
- LOW PLANTINGS AND ADDITIONAL SHADE TREES**
- SAND VOLLEYBALL**
- GRAVEL FITNESS TRAIL** approx. 1/4 mile
- TRAIL LANDSCAPING** low naturalized plantings

The plan also includes two inset images: one showing a view of the main entry with trees and a path, and another showing a low wall with park name, a gated maintenance entry, and signage to indicate pedestrian connection to Moore's Creek Trail. A scale bar (0' to 60') and a north arrow are located in the bottom right corner.

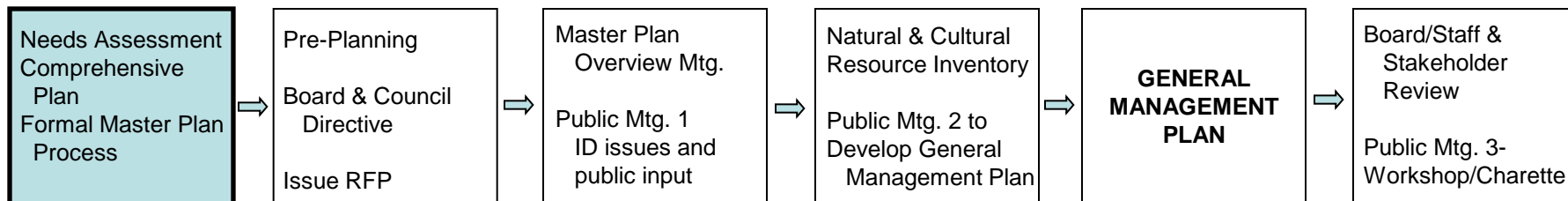
12-20-07  
LPDA  
LAND PLANNING & DESIGN  
ARCHITECTS

## Construction to begin June/July 2013



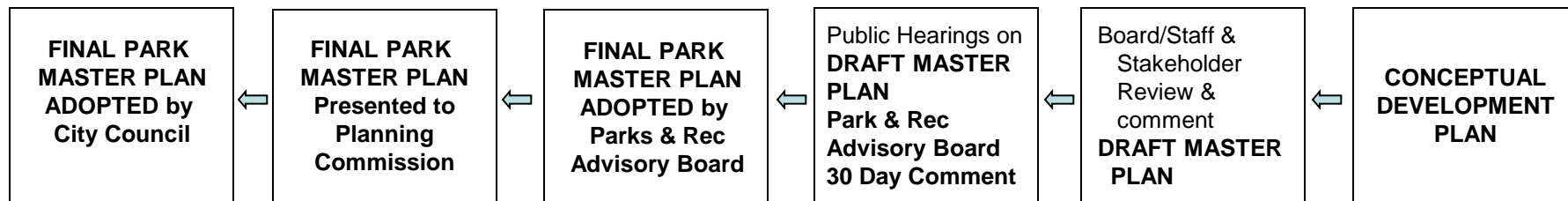
# Parks and Recreation Department

## Park Master Planning Process



### WHY Create a Formal Planning Process ?

- Provide the community with a consistent, transparent and open process to master plan park and recreational facilities.
- Ensure that best management practices in park and recreation planning and operations are addressed in the planning process.
- Ensure that Park Master Plans are created within the context of the entire park system, the needs of the community and the City Comprehensive Plan.
- Provide the community with a strategic long-range vision for future park improvements, and a sound basis for future CIP funding and development.





# Completed Park Master Plans

- Starr Hill Park (2007)
- Rives Park (2008)
  - Construction begins this month
- McIntire Park West (2008) and East (2012)
- Azalea Park (2010)
- Meadow Creek Stream Valley
  - June 3, 2013 City Council
  - ~\$4M Stream restoration through VARTF
- Tonsler Park
  - Likely on a July Council Agenda

# Park Land Acquisitions

- 2001 – 13.5 acres
- 2009 – 20.3 acres
- 2010 – 7.0 acres
- 2011 – 9.8 acres
- 2012 – 5.8 acres
  
- TOTAL New Acres of Park Land – 56.418

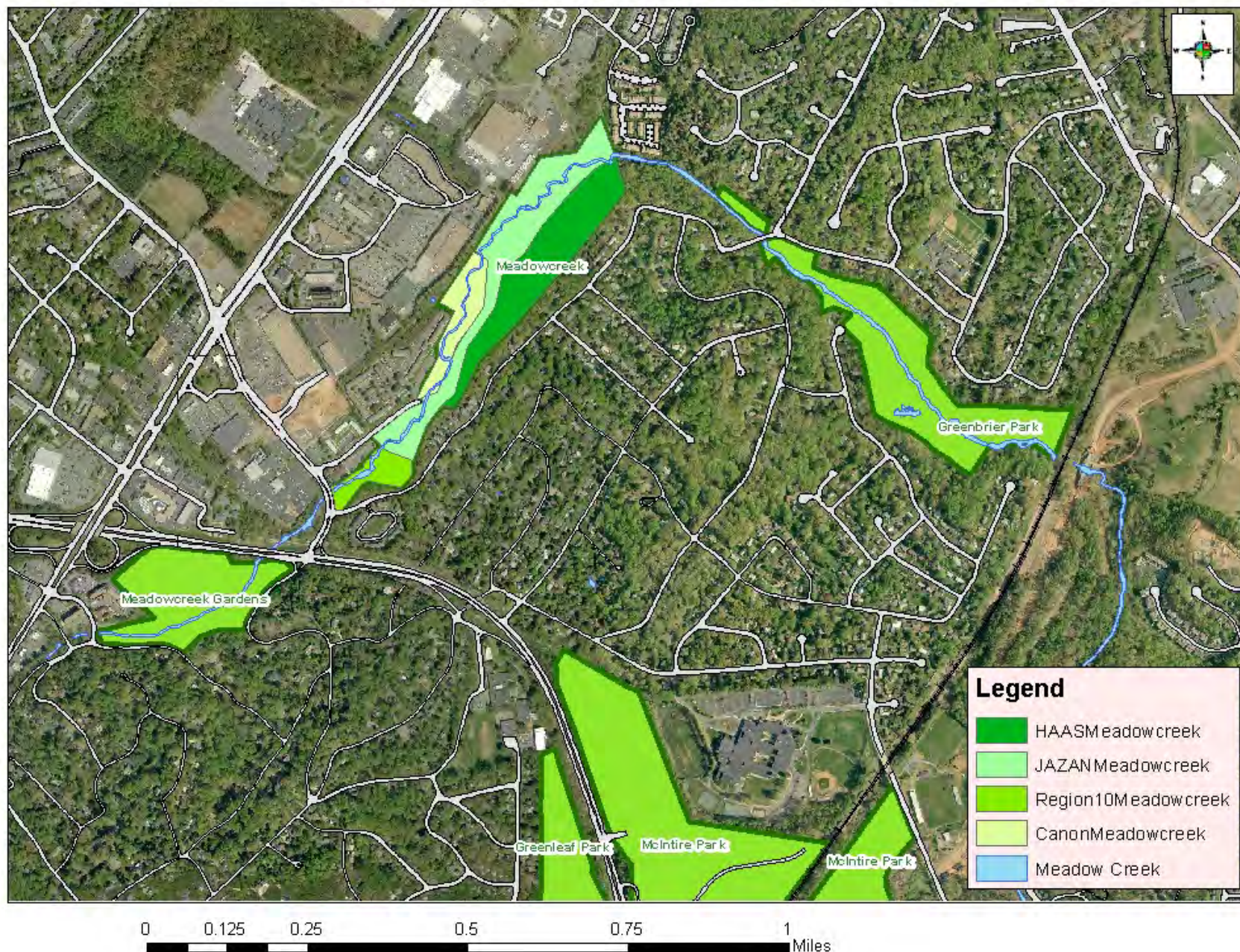


# Parkland Acquisitions - Meadowcreek West BEFORE 2001





## Parkland Acquisitions - Meadowcreek West





# Park Land Acquisition

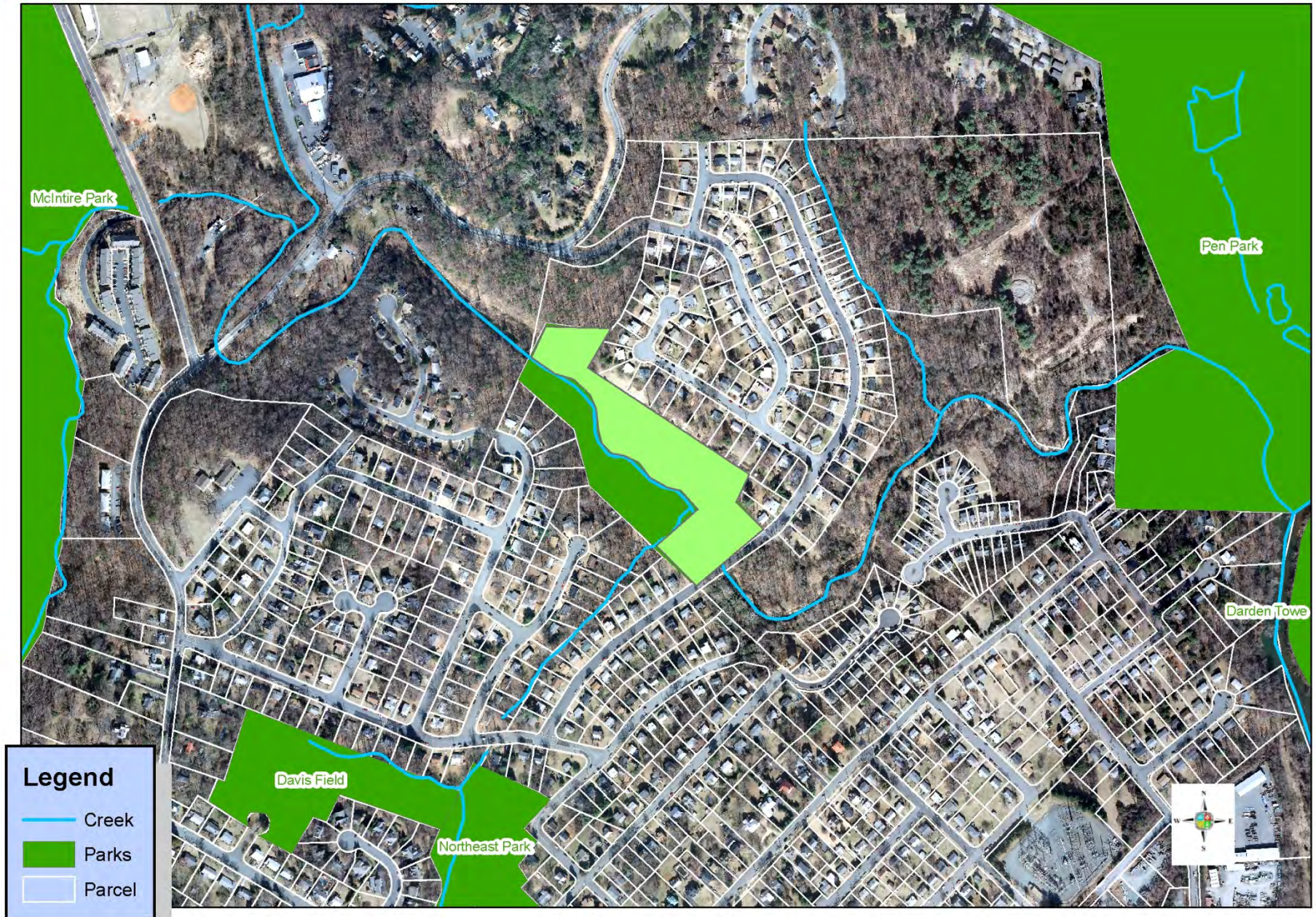
T.E. Wood - 2.3 acres - \$10,100 - 2009





# Park Land Acquisition

## Locust Meadows Land Trust - ~6 acres - donation - 2010





**Park Land acquisition**  
**Davis - 22,000 s.f. - Moore's Creek at McElroy - 2012**



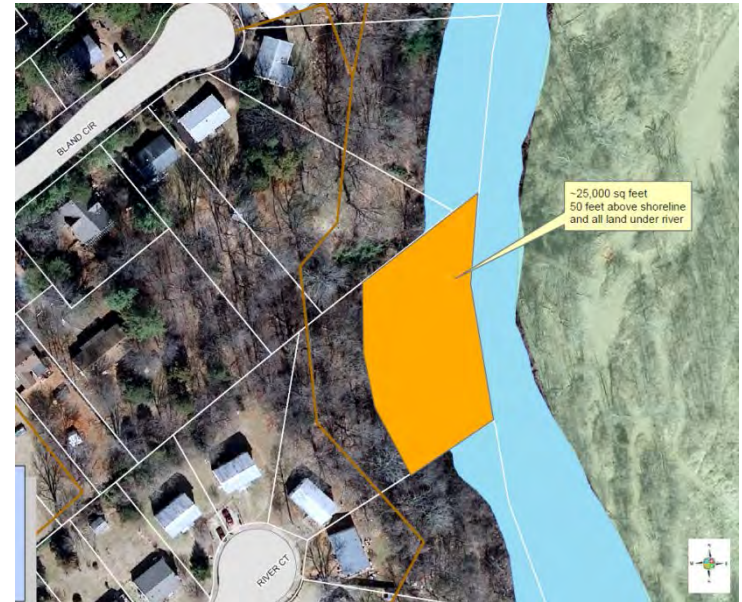


# LeBeau – Rivanna River

- 2011
- Land swap for Preston Avenue
- No cost
- 11,000 sq. ft.



Land given near Washington Park

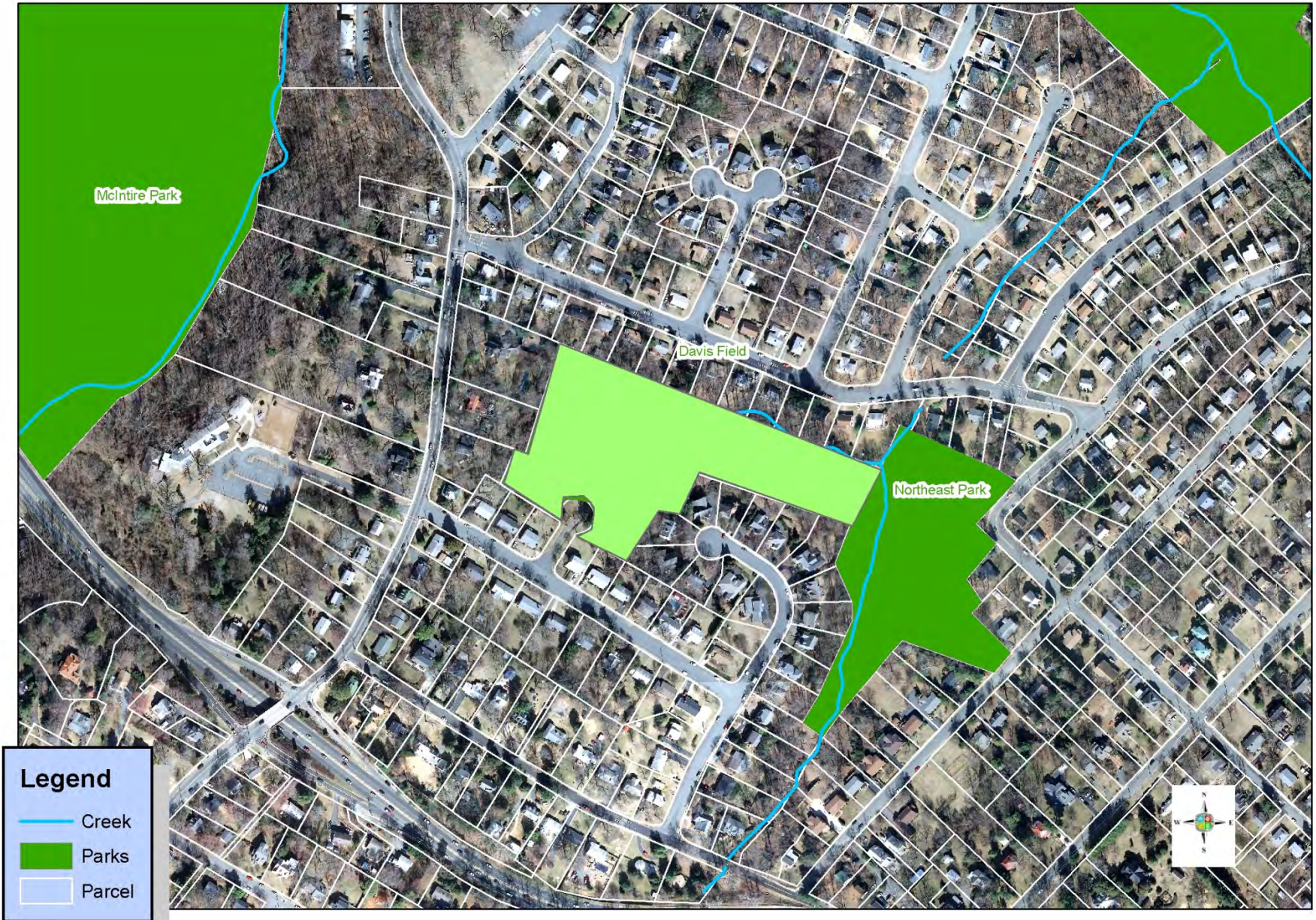


Land gained along river



# Park Land Acquisition

## Davis Field - 6.5 acres - \$750,000 - 2011



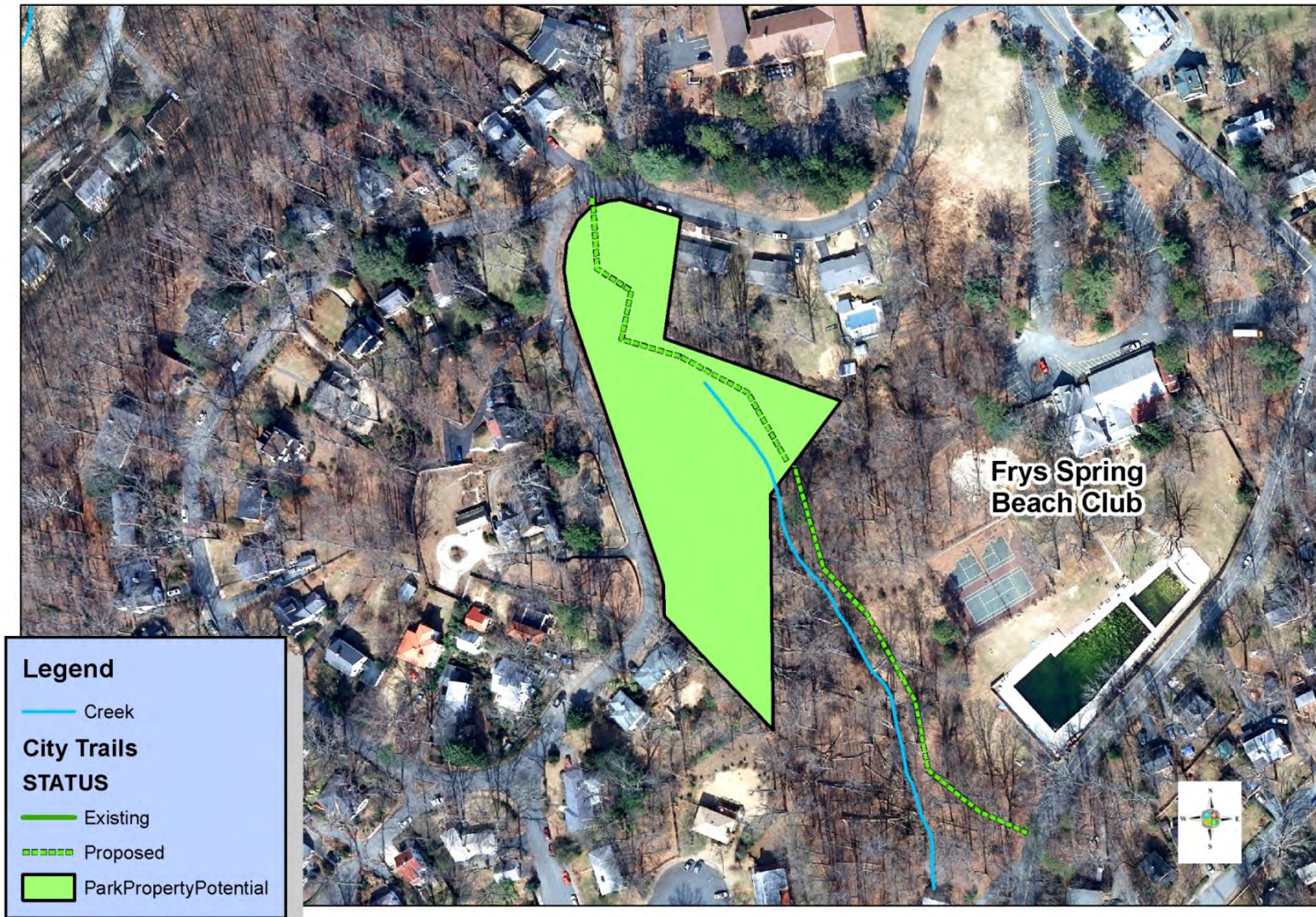


# Park Land Acquisition - Donation Southern Development- 1.5 acres - 2010





# Park Land Acquisition JPC Land Trust - 1.3 acres - 2012



*This park was recently expanded with the additional purchase of 2 acres from the Fry's Spring Beach Club as part of the Old Lynchburg Road project*



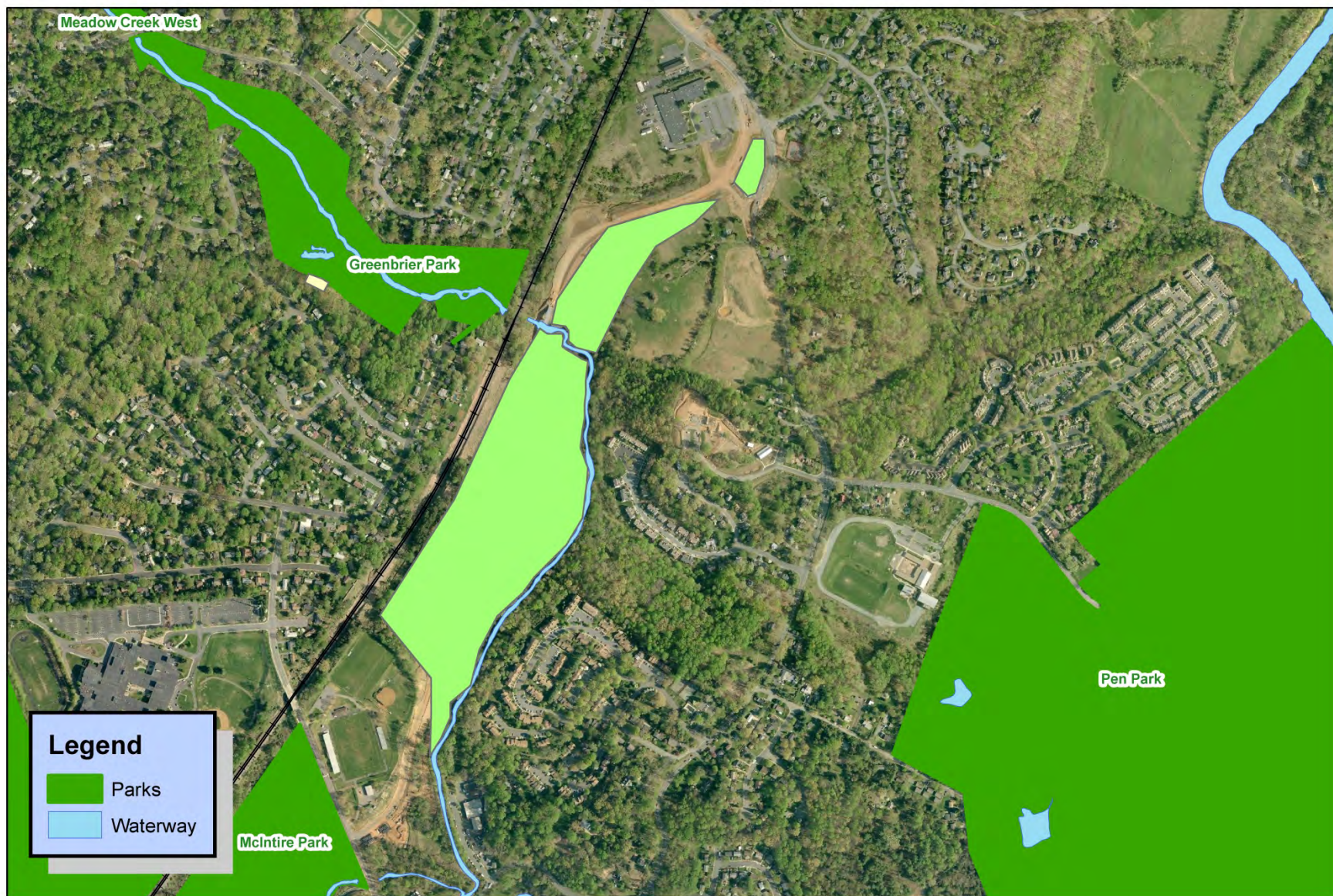
## Property Purchase - 1279 Kenwood Lane





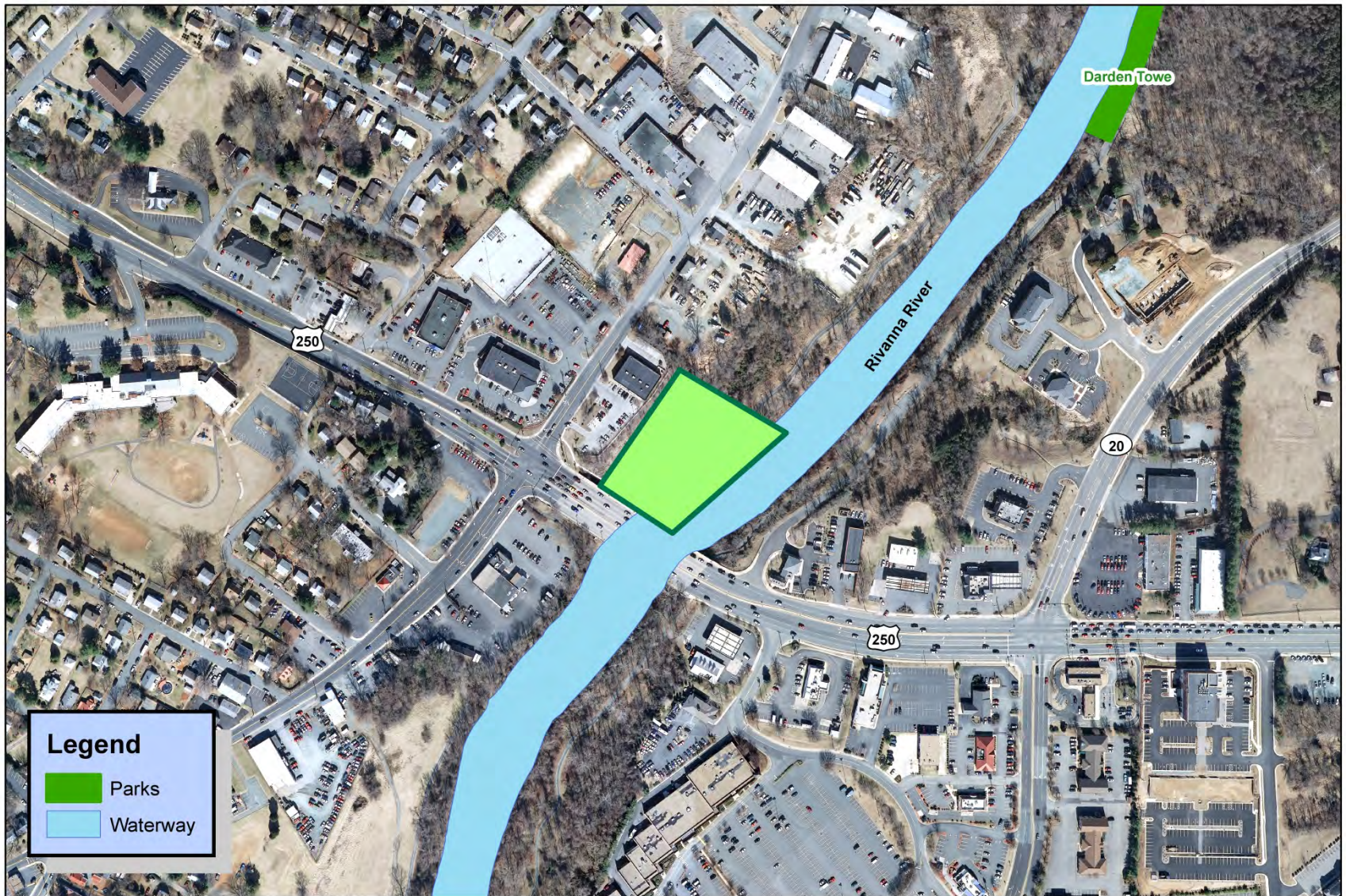
# Parkland Acquisition

## John Warner Parkway - ~49 acres





# Parkland Acquisition Cosner - Rivanna River

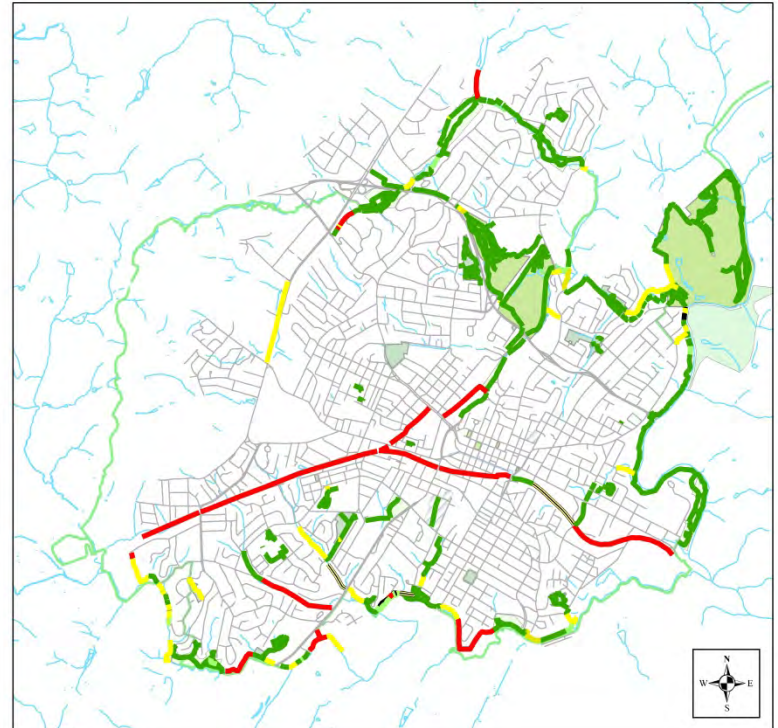
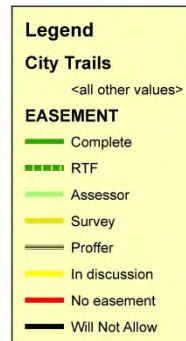




# Trail Easements

- Moore's Creek
  - 8 new easements acquired
  - 10 properties in discussion
  - ~5 remaining properties
- Meadow Creek
  - only 4 properties remain, all are nearly signed
- Rivanna River
  - 1 new property acquired
  - 7 remaining properties

Trail Easement  
Status  
Charlottesville  
- 2011 -





# New Park Trails



250 bypass trail – McIntire West



Pen Park entrance trail



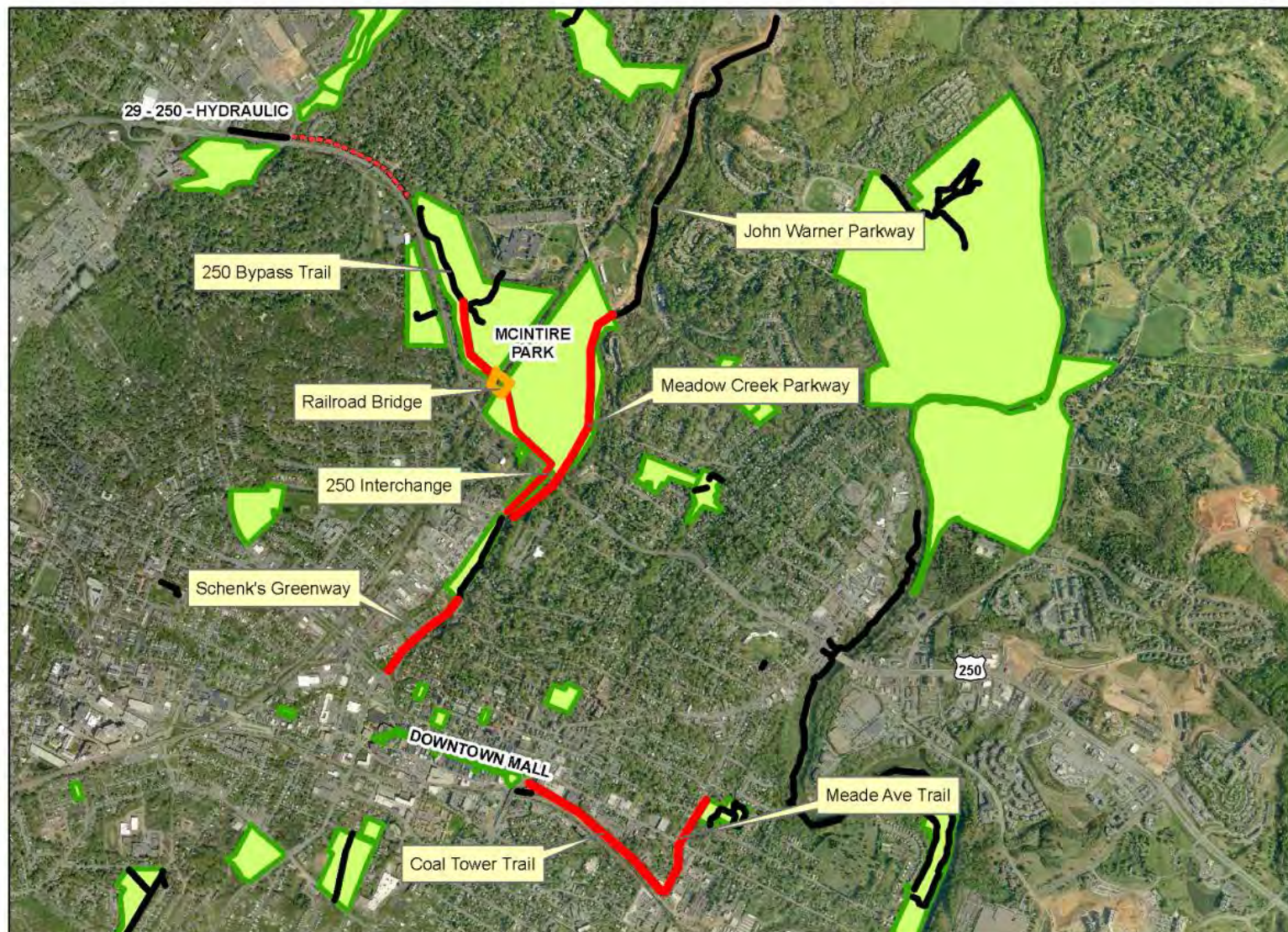
Azalea Park entrance trails



Ragged Mountain



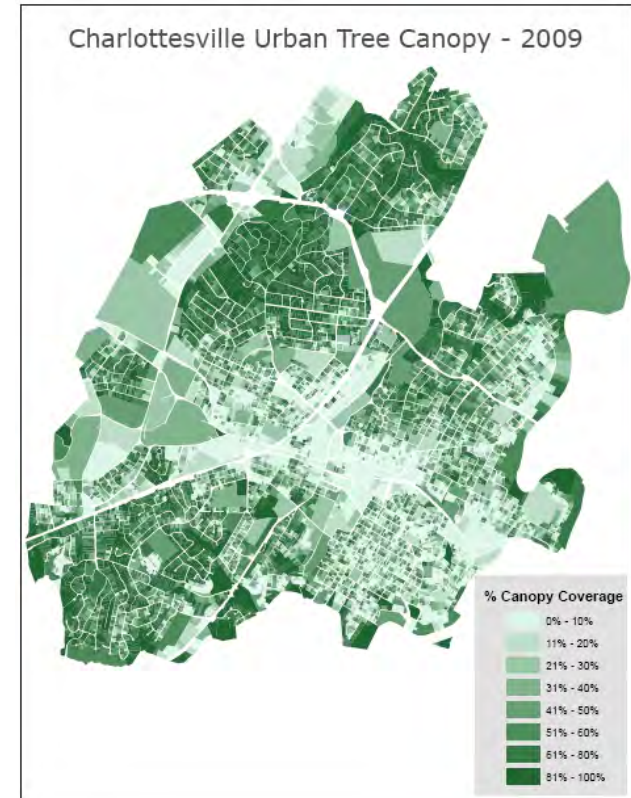






# Urban Forest Management

- Canopy study
- Forest Assessment
- Urban Forest Management Plan
- Tree City USA (7 years)
- Invasive Plant Management
- Tree Commission





# Stormwater Management

- Rain gardens at Meade, Smith, Greenleaf, Azalea (2), Forest Hills (2), Pen Park shop
- Stream improvements at Meadowcreek Golf Course
- Stream restoration of Meadow Creek





# Facility Attendance & Programs

- 2012 Attendance – Selected Locations
  - Smith Aquatic & Fitness Center 70,344
  - Onesty, Washington & McIntire Pools 49,216
  - Meadowcreek Golf Course 37,379
  - Carver (2013 Jan-March attendance) 9,362
  - Skate Park 8,076
- Registered Program participation
  - FY 2010 5,598
  - FY 2011 6,001
  - FY 2012 6,430
  - FY 2013 (ytd) 6,944



# Recreation Programs

- Storyline



- New Events: Movies in the Park, Sunday Sundowns, Tonsler Park Festival
- Scholarship Program
  - January 2010      129 participants
  - March 2013      584 participants



# Management/Tracking

- GIS based land management
  - Trail system development, landscaping management, snow plow routes
- Data Management and Analysis and P3
  - Allows us to react to trends and more accurately manage budgets and resources



# Management/Tracking

- Organizational Strategic Alignment
- 2 Division Managers vs. 1 Assistant Director
  - Management Analyst
  - P3 Performance Measures
  - Position Realignment



# What's next?

- Continued land and trail easement acquisition
- Design work on East McIntire and Skate Park (RFP)
- Expanding programming, outdoor concert music series in parks, new facilities
- Revenue and Fees Philosophy and Policy
- Policy Development:
  - Encroachments
  - Wildlife Conflict Resolution
- Parks & Recreation System-wide Master Plan



CHARLOTTESVILLE

parks & recreation

